

magnetic

Measuring Computer

Operation manual



magnetic ...einfach besser

magnetic GmbH & Co. KG
Am Richtbach 5
D-74547 Untermünkheim


Tel. +49 7944 94199-0
Fax +49 7944 94199-19

info@magnetic-online.de
www.magnetic-online.de

Managing director Shareholder:
Michael Bader

VAT ID No: DE 255 018 730
Trade Register: HRA 571362
Registered court: Stuttgart

Version: MC_ENG_04.2020



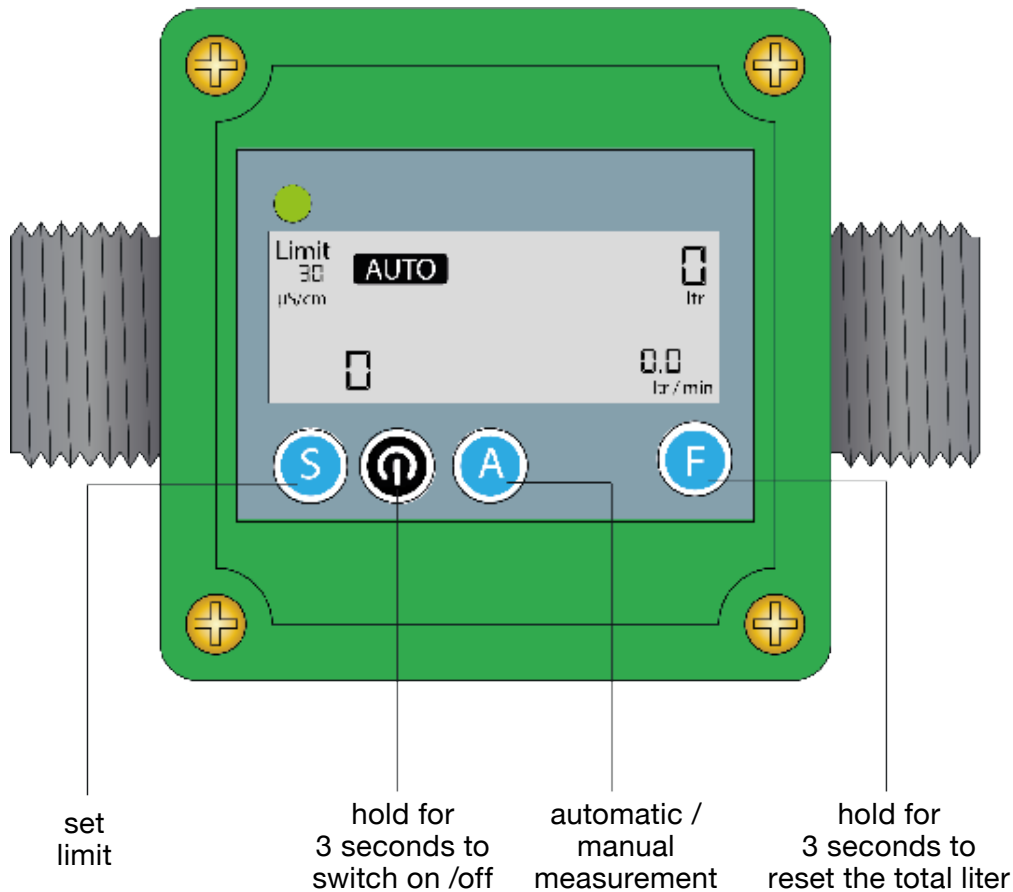
magnetic

Measuring Computer

Content

Quick-Start.....	4
To switch on and off	4
Switching the conductivity to TDS	4
Manual measurement of the conductivity.....	5
Automatic monitoring of the conductivity / Set limit.....	5
Switching between automatic and manual monitoring	5
Low battery power alert.....	6
Inserting/replacing the batteries	6
Technical Data	6
Dimensions	7

Quick-Start



To switch on and off

Press and hold the power button for three seconds to turn the meter on or off.

Switching the conductivity value to TDS

The factory setting of the measuring computer is electrical conductivity displayed in " $\mu\text{S}/\text{cm}$ ". To switch the measurement to TDS in „ppm“, briefly press the power button. The measuring computer now shows „ppm“ (instead of „ $\mu\text{S}/\text{cm}$ “).

Manual measurement of the conductivity

Press the “A” key to display the current conductivity value ($\mu\text{s}/\text{cm}$). The maximum settable conductivity value is $1999 \mu\text{s}/\text{cm}$.

Automatic monitoring of the conductivity // Set limit


Press the “S” key to set the limit value for the conductivity in the display. The increase step is $15 \mu\text{s}/\text{cm}$. A longer pressing of the “S” key resets the value back to zero.

Switch to automatic mode after you have set a limit value. Do that by pressing the “A” key to first do a manual test. Then press the “A” key again to switch to the automatic mode. “Auto” will then be shown in the display.

The conductivity will then be measured again every 20 litres. The LED on the left above the display blinks green for 30 seconds if the measured value is below the previously set limit value. The LED will start to blink red and an alarm tone will be emitted if the measured value exceeds the set limit value.

Switching between automatic and manual monitoring

Press the “A” key to switch from automatic to manual mode and thus reset the last measured value of the automatic monitoring

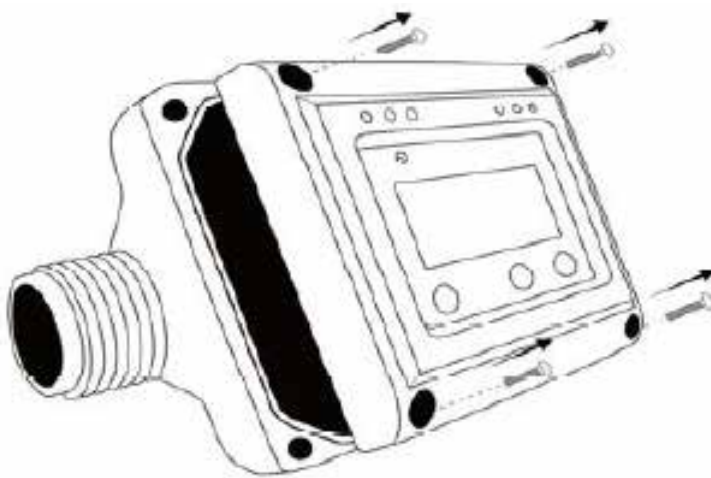
 *Practical tip: When all basic settings have been made (automatic mode & limit) it is sufficient if the measuring computer is only switched on and off in practice. All settings are saved.*

Low battery power alert

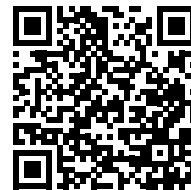
The “battery” symbol on the display will blink when the batteries are drained. The last measured and displayed value and the settings will be stored and recovered when the battery replacement is completed.

Inserting/replacing the batteries

Remove the four front screws of the housing (see illustration below) and insert three batteries (AAA alkaline) into the battery holder. The front part of the housing can be turned by 90° or 180° if desired before fastening with the screws.



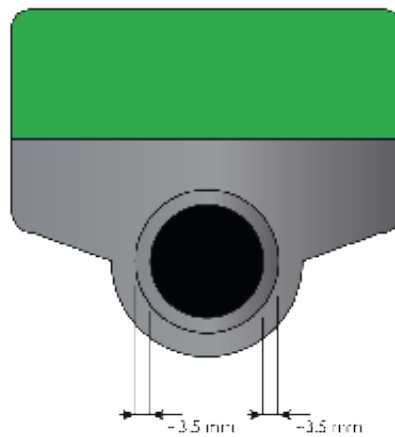
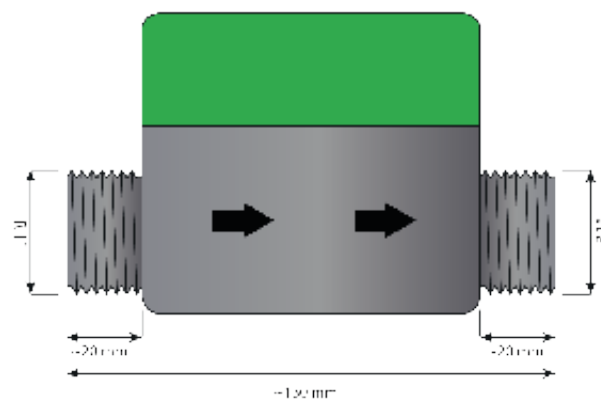
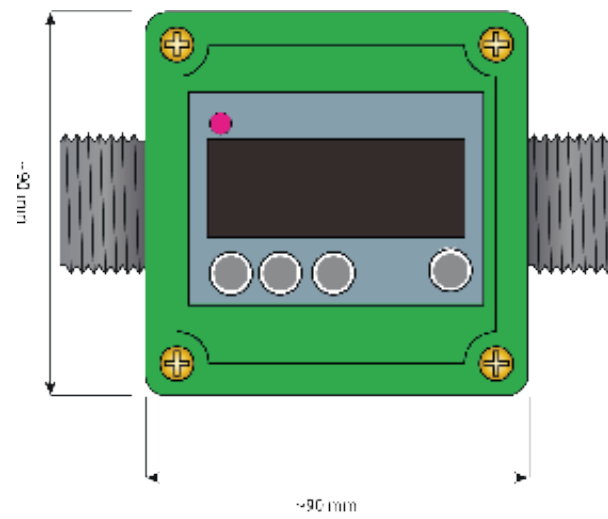
Youtube:



Technical data

Flow rate	3 - 100 litres/min. or 0.8 - 26.4 gallons/min
Displayed flow quantity	0.1 - 1999999 Liter or gallons
Accuracy	+/- 5 %
Batteries	4,5 VDC, 3x AAA Alkaline
Coupling	1" outer thread
Operating temperature	0 - 80 °C
Operating pressure	4 bar max.
Break-resistant up to	6 bar
Materials	Polyamide, fibreglass, stainless steel

Dimensions



magnetic ...einfach besser

magnetic GmbH & Co. KG
Am Richtbach 5
D-74547 Untermünkheim

Tel. +49 7944 94199-0
Fax +49 7944 94199-19

info@magnetic-online.de
www.magnetic-online.de

Managing director Shareholder:
Michael Bader

VAT ID No: DE 255 018 730
Trade Register: HRA 571362

www.magnetic-online.de

